



15301971
Revision F
February 2025

Piggyback Assembly

3000 Series

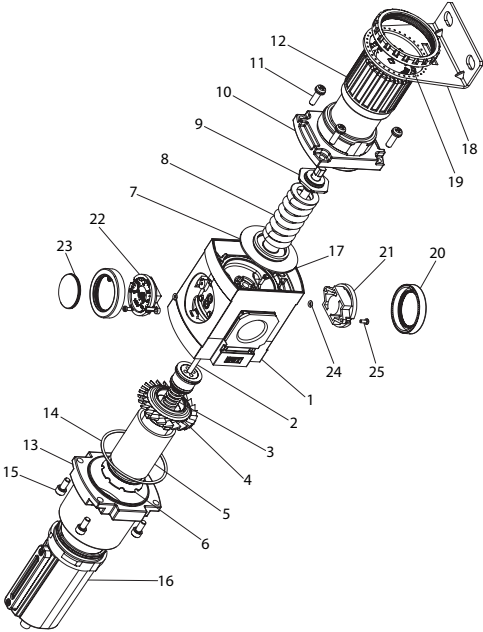
Parts Information



Save These Instructions

ARO

Piggyback Assembly 3000 Series P394XX-XXX Exploded Diagram

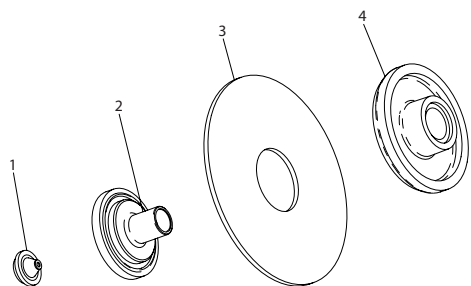


(Dwg. 15322019)

Piggyback Assembly 3000 Series P394XX-XXX Parts List

Item	Part Description	Material	Part Number	Item	Part Description	Material	Part Number
1	Piggyback Body	Aluminum	---	14	Coupler "O" Ring	Nitrile	---
	3/4" NPT (P3945X-XXX)		---	15	Coupler Screw	Steel	---
	1" NPT (P3946X-XXX)		---	16	Metal Bowl Assembly		
	3/4" BSP (P394EX-XXX)		---		Manual Drain (P394XX-X20)	---	104322
	1" BSP (P394FX-XXX)		---		Auto Drain (P394XX-X24)	---	104323
2	P-Valve Stem Assembly	---	---	Manual Drain with Sight Glass (P394XX-410)	---	104450	
3	R-Valve Spring	Stainless Steel	---	Deflector with Sight Glass (P394XX-414)	---	104451	
4	Deflector	Nylon	---				
5	Filter Element	Polyethylene	104445	17	Static Pressure Tube	Acetal	---
	5 Micron (N/A)		104446	18	L-Bracket	Steel	104406
6	Baffle	ABS	---	19	Panel Mount Nut	Acetal	104419
7	Diaphragm Assembly	---	---	20	Cover Ring	Nylon	---
	Adjusting Spring	Steel	---	21	Block Cover		---
0-30 psi (P394XX-4XX)	104534		22	Flush Type Gauge	---	104334	
0-50 psi (P394XX-2XX)	104456			0-140 psi			
5-125 psi (P394XX-1XX, P394X-6XX)	104457		23	Gauge Cover	Polycarbonate	---	
10-250 psi (P394XX-3XX)	104458		24	Gauge "O" Ring	Nitrile	---	
9	Adjusting Assembly	---	---	25	Gauge Plate Bolt	Steel	---
10	Bonnet	Aluminum	---	Service Kit (Relieving: includes items 2, 3 and 7)	---	104541	
11	Bonnet Screw	Steel	---				
12	Handle	Acetal	---	Service Kit (Non-Relieving: includes items 2, 3 and 7)	---	104280	
13	Coupler	Aluminum	---		Tamper Kit		---

Diaphragm Assembly 3000 Series P394XX-XXX Exploded Diagram

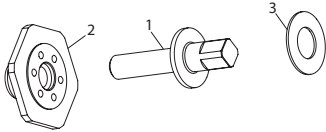


(Dwg. 15322043)

Diaphragm Assembly 3000 Series P394XX-XXX Parts List

Item	Part Description	Material	Part Number
1	Relief Valve Seat	Nitrile	---
2	Relief Valve	Zinc	---
3	Diaphragm	Nitrile+Nylon	---
4	Diaphragm Shell	Aluminum	---

Adjusting Assembly 3000 Series P394XX-XXX Exploded Diagram

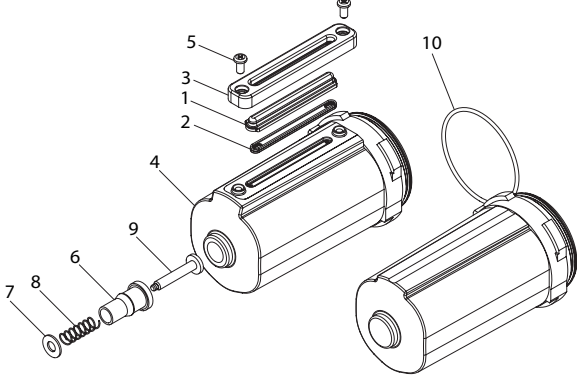


(Dwg. 15322068)

Adjusting Assembly 3000 Series P394XX-XXX Parts List

Item	Part Description	Material	Part Number
1	Adjusting Bolt	Steel	----
2	Adjusting Nut		----
3	Lining	PTFE	----

Metal Bowl Assembly 3000 Series P394XX-XXX Exploded Diagram



(Dwg. 15322035)

Metal Bowl Assembly 3000 Series P394XX-XXX Parts List

Item	Part Description	Material	Part Number
1	Sight Glass	Nylon	---
2	Sight Glass Gasket	Nitrile	---
3	Sight Cover	Aluminum	---
4	Metal Bowl		---
5	Bolt	Steel	---
6	Drain Housing	Nitrile	104316
7	Retainer	Stainless Steel	
8	Drain Spring		
9	Drain Stem	Brass	
10	Bowl "O" Ring	Nitrile	---
Service Kit (Includes Items 6, 7, 8, 9, 10 and Coupler O-Ring)		---	104452

Parts and Maintenance

When the life of the tool has expired, it is recommended that the tool be disassembled, degreased and parts be separated by material so that they can be recycled.

Tool repair and maintenance should only be carried out by an authorized Service Center.

Refer all communications to the nearest **ARO** Office or Distributor.

Related Documentation

For additional information refer to:
Product Safety Information Manual 15301765.
Product Information Manual 15301773.
Maintenance Information Manual 15301781.
Manuals can be downloaded from arozone.com.

Part No. 100400-74

arozone.com

© 2025 **ARO**

ARO